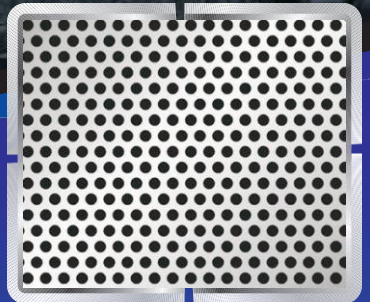




# MAHENDRA METALS & TUBES

AN ISO 9001:2000 CERTIFIED COMPANY





## COMPANY PROFILE



### Introduction

We take pride in introduction ourselves as one of the leading importers, manufacturers, stockists and suppliers of a comprehensive range of premium quality Stainless Steel and Ferrous and Non-Ferrous metal items which are required by your company in all aspects of projects implementation, maintenance, modernization etc. Our offering include stainless steel pipes / tubes, plates, coils, sheets, rods, strips, nuts and Bolts. **Mahendra Metals** products are known for their high performance, durability and effectiveness.

Established in 1990, the company has always achieved a good growth rate and success, a direct result of our efficient service to trade and industry. We are a proprietorship firm, working under the capable guidance who has vast experience and extensive knowledge of this industry. **Mahendra Metals** was established with the objective of always putting customer interest first; that is what we did and what we are still doing today.

#### Our Product Line :

Stainless Steel : Pipes & Tubes (Seamless / Welded / Fabricated), Sheets, Plates, Rods, Wires, Pipes Fittings and components in AISI 304, 304L, 309, 310, 316, 316L, 317L, 321, 321, 41, 420 & 431 Grades etc. in all dimensions in indigenous and imported make.

#### Alloys Steel / Carbon Steel :

Pipes and Tubes ( ERW & W / Seamless) as per ASTM A335, P5, P11, P12, P22 and ASTM A 106, Gr. B, SA 179, BS-3059 Part I & II, IS-1269

#### SS/CS/AS Fittings :

Butt-welded / Stock-Welded / Forged and compression type with Ferrules as per ASTM A403, WPS, A182, A105, A234, WPB, WP5, WP11, WP12, WP22, etc. as per project requirements.

We also stock Monel, Nickel, Hastalloy, Inconel 600 / 800, Copper, Brass, Aluminium, Lead, Tin, Zinc and other minor metals in various sizes and shapes.

Over the years, we have gained sufficient experience in this field and received substantial business from reputed concerns in the chemical industry : petrochemical corporations, oil refineries, pharmaceutical companies, pulp and paper mills, cement plants and fertilizer plants. We have also been suppliers to dairies, breweries, sugar mills, nuclear and thermal power stations, engineering concerns as well as projects of national importance. Many of our clients place orders with us on a repeated basis, which speaks volumes of the quality of our products and service.





## PRODUCT RANGE



S.S. ERW PIPES



SEAMLESS PIPE



S.S. PERFORATED SHEET

## OUR SPECIALIST STAINLESS STEEL PRODUCT



S.S. FLANGES



S.S. FERRULE FITTINGS



S.S. ELECTRO POLISH PIPES



## PRODUCT RANGE



PIPES & TUBES

**Stainless Steel** : ASTM A312 TP 304/ 304L/ 304H/ 316/ 316L/ 317/ 317L/ 321/310/ 347/ 904L etc.  
**Carbon Steel** : ASTM A53 GR. B/ A106 GR. B/ API 5L GRADE B/ API 5L GR.X42/46/52/56/60/65/70/  
 Low Temperature, Carbon Steel: A333 Gr.3/Gr.6 etc.  
**Alloy Steel** : ASTM A335 GR. P1/ P5/ P9/ P11/ P22/ P91 etc.  
**Nickel Alloys** : Monel, Nickel, Inconel, Hastalloy, Titanium, Tantalum, Bismuth, Aluminium, High Speed Steel, 904L, Alloy 20  
**Duplex & Super Duplex Steel** : UNS S31803, UNS S32750, UNS S32760,  
**Non Ferrous Metal** : Copper, Brass, Bronze, Zinc, Lead etc. Types : Round , Square, Rectangular.  
**Size** : 1/2" to 24" NB. (Seamless & Welded)  
**Wall Thickness** : Sch. 5S to Sch. XXS



Buttweld Fittings

**Stainless Steel** : ASTM A403 WP 304/ 304L/ 304H/316/ 316L/ 317/ 317L/ 321/ 310/ 347/904L etc.  
**Carbon Steel** : ASTM A234 WPB/A420 WPL3/A420 WPL6/ MSS-SP-75 WPHY 42/46/52 / 56/60/65/70  
**Alloy Steel** : ASTM A234 WP1/WP5/WP9/ WP11/WP22/WP91 etc.  
**Duplex & Super Duplex Steel** : UNS S31803, UNS S32750, UNS S32760,  
**Others** : Monel, Nickel, Inconel, Hastalloy, Copper, Brass, Bronze, Titanium, Tantalum, Bismuth, Aluminium, High Speed Steel, Zinc, Lead, 904L, Alloy 20 etc.  
**Types** : Elbow, Tee, Reducer, Return Bends, Stub-Ends, Cap, Collar, Cross, Insert etc.  
**Size** : 1/4" NB TO 32" NB. (Seamless & Welded)  
**Wall Thickness** : Sch. 5S To Sch. XXS.



Forged Socketweld & Screwed Fittings

**Stainless Steel** : ASTM A182 F304/ 304L/ 304H/ 316/ 316L/ 317/ 317L/ 321/310/ 347/ 904L etc.  
**Carbon Steel** : ASTM A105 /A694 F42/46/ 52/56/ 60/ 65/70 / A350 LF3/ A350 LF2.  
**Alloy Steel** : ASTM A182 F1/ F5/ F9/ F11/ F22/F91 etc.  
**Others** : Monel, Nickel, Inconel, Hastalloy, Copper, Brass, Bronze, Titanium, Tantalum, Bismuth, Aluminium, High Speed Steel, Zinc, Lead, etc.  
**Types** : Elbow, Tee, Union, Cross, Coupling, Cap, Bushing , Plug, Swage Nipple, Welding Boss, Hexagon Nipple, Barrel Nipple, Welding Nipple, Parraler Nipple, Street Elbow, Hexagon Nut, Hose Nipple, Bend, Adapter, Insert, Weldolet, Elbowlet, Sockolet, Thredolet, Nipolet, Letrolet, etc.  
**Size** : 1/4" NB TO 4" NB. (Socketweld & Threaded)  
**Class** : 3000#, 6000#, 9000#.



Flanges

**Stainless Steel** : ASTM A182 F304/ 304L/ 304H/316/ 316L/ 317/ 317L/ 321/ 310/ 347/ 904L etc.  
**Carbon Steel** : ASTM A105/ A694F42/46/52/56/60/65/70/A350 LF3/A350 LF2, etc.  
**Alloy Steel** : ASTM A182 F1/ F5/ F9/ F11/ F22/ F91 etc.  
**Duplex & Super Duplex Steel** : U NS S31803, UNS S32750, U NS S32760, 904L, Alloy 20  
**Others**: Monel, Nickel, Inconel, Hastalloy, Copper, Brass, Bronze, Titanium, Tantalum, Bismuth, Aluminium, High Speed Steel, Zinc, Lead, etc.  
**Types** : Weldneck, Slipon, Blind, Socket Weld, Lap Joint, Spectacles, Ring Joint, Oriface, Long Weldneck, Deck Flange, RTJ, Flange  
**Size** : 1/2" N B TO 24" NB.  
**Class** :150#, 300#, 400#, 600#, 900#, 1500# & 2500#.



Ferrule Fittings

**Stainless Steel** : ASTM A182 F304/ 304L/ 304H/ 316/ 316L/ 317/ 317L/ 321/310/347/ 904L etc.  
**Carbon Steel** : ASTM A105 / A694 F42/46/ 52/56/ 60/65/70 /A350 LF3/ A350 LF2.  
**Alloy Steel** : ASTM A182 F1/ F5/ F9/ F11/ F22/F91 etc.  
**Duplex & Super Duplex Steel** : UNS S31803, UNS S32750, UNS S32760, 904L, Alloy 20  
**Other** : Stainless Steel, Nickel Alloys, Carbon Steel, Alloy Steel, Monel, Nickel, Inconel, Hastalloy, Copper, Brass, Bronze, Titanium, Tantalum, Bimuth, Aluminium, High Speed Steel, Zinc, Lead, Etc.  
**Types** : Nipples, Adaptors, Crosses, Union Ball Joints, Reducing Bushing, Reducers, Pipe Caps, Couplings, Pipe Plug, Hollow Hex Plug, Elbow, Reducing Union, 90 Deg. Union Elbow, Reducing 90 Deg. Union Elbow Etc. Extender Leg 90 Deg. Union Elbow, 45 Deg. Union Elbow, Union Tee, Female Connector, Male Connector, Manifold Tee, Locator Union, Extended Run Leg Union Tee, Reducing Tee, Tribow, ATW Weld Ring, Tube Socket weld To Pipe Butt Weld, Tube Butt Weld To Tube Socket Weld, Port Connector, Etc.



## PRODUCT RANGE



SHEET, PLATE & COIL

**Stainless Steel Coils, Sheets & Plates** as per ASTM A 240 Gr. TP 304, 304L, 304LN, 309, 309S, 309H, 310S, 310H, 316, 316L, 316H, 316LN, 316TI, 317, 317L, 321, 321H, 347, 347H, 348, 348H, 409, 410, 420, 430 etc.

**Alloy Steel Plates** as per ASTM A 387 Gr. 2, 5, 9, 11, 12 & 22 in class 1 & 2, ASTM A 204, Gr. A & B, DIN 17175 Gr. 15Mo3 & 16Mo3 with IBR Test Certificate.

**Carbon Steel / Boiler Quality Plates** as per IS 2062 Gr. A, B & C, IS 2002 Gr. 1 & 2, ASTM A516 Gr. 60 & 70 ASTM A515 Gr. 70.

**High Nickel Alloy** : Monel, Nickel, Inconel, Hastalloy, Copper, Brass, Bronze, Brass, Titanium, Tantalum, Bismuth, Aluminium, High Speed Steel, Zinc, Lead, etc.

**Duplex & Super Duplex Steel** : UNS S31803, UNS S32750, UNS 532760, 904L, Alloy 20  
**Types** : Sheet, Plates, Strips, etc.



Fasteners & Nut Bolts

**Stainless Steel** : AISI 302, 304, 304L, 316, 316L, 310, 317, 321, 347, 410 420, 904L etc.

**Alloy Steel** : 4.6, 5.6, 6.6, 8.8, 10.9 & 12.9 'R', 'S', 'T' Conditions.

**Carbon Steel** : Bare Condition, Galvanized, Phosphetised, Cadmium Plated, Hot Deep Galvanized, Bloodied, Nickel Chrome Plated etc.

**Non-Ferrous Metal** : Copper, Brass, Aluminium, Titanium, Nichrome, Al-Bronze, Phosphorous Bronze etc.

**Type** : Bolts, Nuts, Washers, Anchor, Fastners, Stud Bolts, Eye Bolt, Stud, Threaded Rod, Cotter Pin, Socket, Screw, Fine Fasteners & Spares, Foundation Fasteners etc.



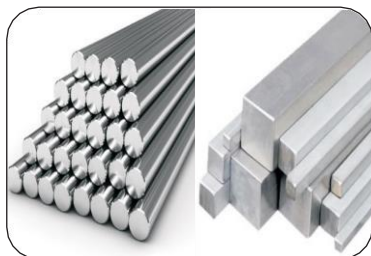
Valve

**Stainless Steel** : AISI 304, 304L, 316, 316L, 310, 317, 317L, 321, 347, 904L etc.

**Carbon Steel** : A105, A216, Gr. WCB, Cadmium Plated, Nickel, chrome Plated etc.

**Non-Ferrous Metal** : Copper, Brass, Titanium, Phosphorous Bronze etc.

**Type** : Ball Valve, Gate Valve, Check Valve, Needle, Valve, Mini Valve, Gauge Rott Valve, Globe Valve, Manifolds (2 Way, 3 Way, 5 Way)



Round, Square & Hex Bar

**Stainless Steel** : As per ASTM A276 & A479 Grade 202 / 304 / 304L / 316 / 316L / 316Ti / 317 / 317L / 321 / 310 / 347 / 410 / 420 / 904 / 303 / 17-4PH, 15-5 PH etc.

**Nickel Alloys** : Monel, Inconel, Hastelloy, Nickel, Titanium, Alloy 20

**Duplex & Super Duplex** : UNS 32205, 31803, 32750, 32760,

**Types** : Round, Square, Rectangular.

**Size** : 3mm - 75 mm dia ready stock with Mill Test Certificate

**Process** : Cold Drawn, Annealed, Export Bright & Black

**Tolerance** : H9, H11

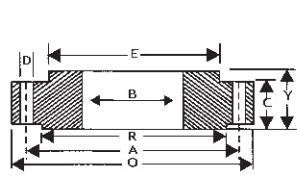
## BRANDS We Deal in



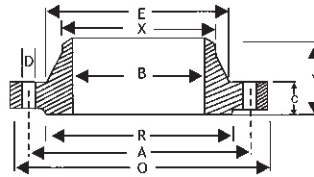




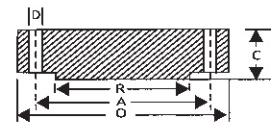
## FLANGES 150 & 300



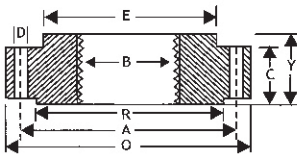
SLIP-ON FLANGE



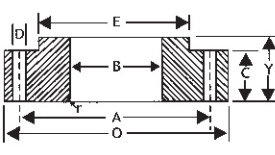
WELDING NECK FLANGE



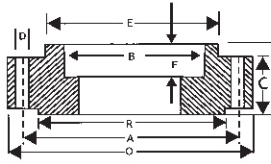
BLIND FLANGE



THREADED FLANGE



LAP JOINT FLANGE



SOCKET WELD FLANGE

### DIMENSIONS OF CLASS 150 FLANGES AS

Nominal Pipe Size	Flange Dia O	Dia of Bolt Circle A	No. of Bolt Holes D	No. of Holes	Thk of Flange C	Dia of Hub E	Length through Hub			Dia Bore		Dia of R/F R	Depth of Socket F	Pipe Dia X
							S/O & S/W	W/N	L/J	S/O & S/W	B			
							Y	Y	Y	B	B			
15	88.9	60.3	15.9	4	11.1	30.2	15.9	47.6	15.9	22.3	22.9	34.9	9.5	21.33
20	98.4	69.8	15.9	4	12.7	38.1	15.9	52.4	15.9	27.7	28.2	42.9	11.1	26.67
25	107.9	79.4	15.9	4	14.3	49.2	17.5	55.6	17.5	34.5	35.0	50.8	12.7	33.40
32	117.5	88.9	15.9	4	15.9	58.7	20.6	57.1	20.6	43.2	43.7	63.5	14.3	42.16
40	127.0	96.4	15.9	4	17.5	65.1	22.2	61.9	22.2	49.5	50.0	73.0	16.9	48.26
50	152.4	120.6	19.0	4	19.0	77.8	25.4	63.5	25.4	62.0	62.5	92.1	17.5	60.31
65	177.8	139.7	19.0	4	22.2	90.5	28.6	69.8	28.6	74.7	75.4	104.8	19.0	73.02
80	190.5	152.4	19.0	4	23.8	107.9	30.2	69.8	30.2	90.7	91.4	127.0	20.6	88.90
100	228.6	190.5	19.0	8	23.8	134.9	33.3	76.2	33.3	116.1	116.8	157.2	23.8	114.30
125	254.0	215.9	22.2	8	23.8	163.5	36.5	88.9	36.5	143.8	144.5	185.7	23.8	141.30
150	279.4	241.2	22.2	8	25.4	192.1	39.7	88.9	39.7	170.7	171.4	215.9	27.0	168.27
200	342.9	298.4	22.2	8	28.6	246.1	44.4	101.6	44.4	221.5	222.2	269.9	31.7	219.07
250	406.4	361.9	25.4	12	30.2	304.8	49.2	101.6	49.2	276.3	277.4	323.8	33.3	273.05
300	482.6	431.8	25.4	12	31.8	365.1	55.6	114.3	55.6	327.1	328.2	381.0	39.7	323.85
350	533.4	476.2	28.6	12	34.9	400.0	57.1	127.0	79.4	359.1	360.2	412.7	41.3	355.60
400	596.9	539.7	28.6	16	36.5	457.2	63.5	127.0	87.3	410.5	411.2	469.9	44.4	406.40
450	635.0	577.8	31.7	16	39.7	504.8	68.3	139.7	96.8	461.8	462.3	533.4	49.2	457.20
500	698.5	635.0	31.7	20	42.9	558.8	73.0	144.5	103.2	513.1	514.3	584.2	54.0	508.00
600	812.8	749.3	34.9	20	47.6	663.6	82.5	152.4	111.1	615.9	615.9	692.1	63.5	609.60

### DIMENSIONS OF CLASS 300 FLANGES AS PER B16.5

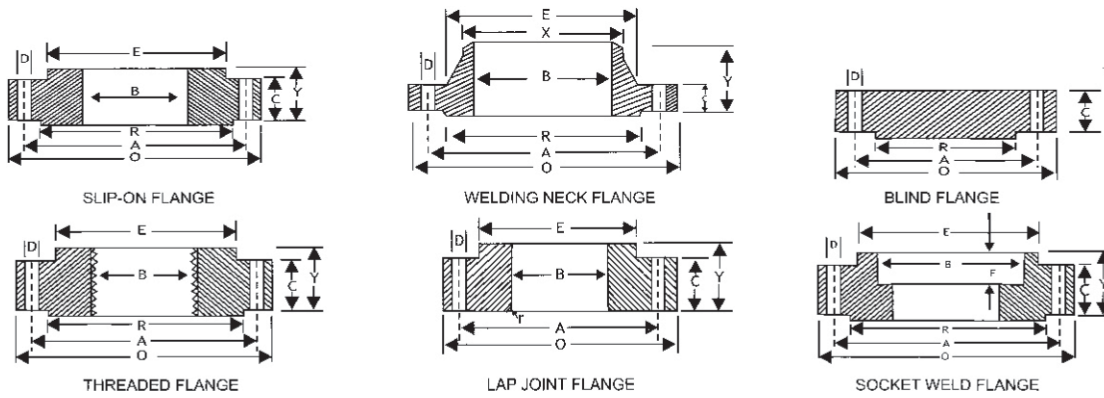
Nominal Pipe Size	Flange Dia O	Dia of Bolt Circle A	No. of Bolt Holes D	No. of Holes	Thk of Flange C	Dia of Hub E	Length through Hub			Dia Bore		Dia of R/F R	Depth of Socket F	Pipe Dia X
							S/O & S/W	W/N	L/J	S/O & S/W	B			
							Y	Y	Y	B	B			
15	95.2	66.7	15.9	4	14.3	38.1	22.2	52.4	22.2	22.3	22.9	34.9	9.5	21.33
20	117.5	82.5	19.0	4	15.9	47.6	25.4	57.1	25.4	27.7	28.2	42.9	11.1	26.67
25	123.8	88.9	19.0	4	17.5	54.0	27.0	61.9	27.0	34.5	35.0	50.8	12.7	33.40
32	133.3	98.4	19.0	4	19.0	63.5	27.0	65.1	27.0	43.2	43.7	63.5	14.3	42.16
40	155.6	114.3	22.2	4	20.6	69.8	30.2	68.3	30.2	49.5	50.0	73.0	15.9	48.26
50	165.1	127.0	19.0	8	22.2	84.1	33.3	69.8	33.3	62.0	62.5	92.1	17.5	60.31
65	190.5	149.2	22.2	8	25.4	100.0	38.1	76.2	38.1	74.7	75.4	104.8	19.0	73.02
80	209.5	168.3	22.2	8	28.6	117.5	42.9	79.4	42.9	90.7	91.4	127.0	20.6	88.90
100	254.0	200.0	22.2	8	31.8	146.0	47.6	85.7	47.6	116.1	116.8	157.2	23.8	114.30
125	279.4	234.9	22.2	8	34.9	177.8	50.8	98.4	50.8	143.8	144.5	185.7	-	141.30
150	317.5	269.9	22.2	12	36.5	206.4	52.4	98.4	52.4	170.7	171.4	215.9	-	168.27
200	381.0	330.2	25.4	12	41.3	260.3	61.9	111.1	61.9	221.5	222.2	269.9	-	219.07
250	444.5	387.3	28.6	16	47.6	320.7	66.7	117.5	95.2	276.3	277.4	323.8	-	273.05
300	520.7	450.8	31.7	16	50.8	374.6	73.0	130.2	101.6	327.1	328.2	381.0	-	323.85
350	584.2	514.3	31.7	20	54.0	425.4	76.2	142.9	111.1	359.1	360.2	412.7	-	355.60
400	647.7	571.5	34.9	20	57.2	482.6	82.5	146.0	120.6	410.5	411.2	469.9	-	406.40
450	711.2	628.5	34.9	24	60.3	533.4	88.9	158.7	130.2	461.8	462.3	533.4	-	457.20
500	774.7	685.8	34.9	24	63.5	587.4	95.2	161.9	139.7	513.1	514.3	584.2	-	508.00
600	914.4	685.8	41.3	24	69.8	701.7	106.4	168.3	152.4	615.9	615.9	692.1	-	609.60

Metric values are direct conversion from Inches table of 816.6

Flanges except Lap Joint will be furnished with (1.6 mm) raised face. Which is included in " Thickness ( C ) and Length Thro



## FLANGES 600 & 900



### DIMENSIONS OF CLASS 600 FLANGES AS PER B 16.5

Nominal Pipe Size	Flange Dia O	Dia of Bolt Circle A	No. of Bolt Holes D	No. of Holes Y	Thk of Flange C	Dia of Hub E	Length through Hub			Dia Bore		Dia of R/F R	Depth of Socket F	Pipe Dia X
							S/O & S/W Y	W/N Y	L/J Y	S/O & S/W B	B			
15	95.2	66.7	15.9	4	14.3	38.1	22.2	52.4	22.3	22.3	22.8	34.9	9.5	21.33
20	117.5	82.5	19.0	4	15.9	47.6	25.4	57.1	25.4	27.7	28.1	42.9	11.1	26.67
25	123.8	88.9	19.0	4	17.5	54.0	27.0	61.9	26.9	34.5	35.0	50.8	12.7	33.40
32	133.3	98.4	19.0	4	20.6	63.5	28.6	66.7	28.4	43.2	43.6	63.5	14.2	42.16
40	155.6	114.3	22.2	4	22.2	69.8	31.7	69.8	31.7	49.5	50.0	73.0	15.8	48.26
50	165.1	127.0	19.0	8	25.4	84.1	36.5	73.0	36.5	62.0	62.4	92.1	17.4	60.31
65	190.5	149.2	22.2	8	28.6	100.0	41.3	79.4	41.1	74.7	75.4	104.8	19.0	73.02
80	209.5	168.3	22.2	8	31.8	117.5	46.0	82.5	45.9	90.7	91.4	127.0	-	88.90
100	273.0	215.9	25.4	8	38.1	152.4	54.0	101.6	53.8	116.1	116.8	157.2	-	114.30
125	330.2	266.7	28.6	8	44.4	188.9	60.3	114.3	60.4	143.8	141.5	185.7	-	141.30
150	355.6	292.1	28.6	12	47.6	222.2	66.7	117.5	66.5	170.7	171.4	215.9	-	168.27
200	419.1	349.2	31.7	12	55.6	273.0	76.2	133.3	76.2	221.5	222.2	269.9	-	219.07
250	508.0	431.8	34.9	16	63.5	342.9	85.7	152.4	111.2	276.3	277.3	323.8	-	273.05
300	558.8	488.9	34.9	20	66.7	400.0	92.1	155.6	117.3	327.1	328.1	381.0	-	323.85
350	603.2	527.0	38.1	20	69.9	431.8	93.7	165.1	127.0	359.1	360.1	412.7	-	355.60
400	685.8	603.2	41.3	20	76.2	495.3	106.4	177.8	139.7	410.5	411.2	469.9	-	406.40
450	742.9	654.0	44.4	20	82.6	546.1	117.5	184.1	152.4	461.8	462.2	533.4	-	457.20
500	812.8	723.9	44.4	24	88.9	609.6	127.0	190.5	165.1	513.1	514.3	584.2	-	508.00
600	939.8	838.2	50.8	24	101.6	717.5	139.7	203.2	184.1	615.9	615.9	692.1	-	609.60

### DIMENSIONS OF CLASS 900 FLANGES AS PER B 16.5

Nominal Pipe Size	Flange Dia O	Dia of Bolt Circle A	No. of Bolt Holes D	No. of Holes Y	Thk of Flange C	Dia of Hub E	Length through Hub			Dia Bore		Dia of R/F R	Depth of Socket F	Pipe Dia X
							S/O & S/W Y	W/N Y	L/J Y	S/O & S/W B	B			
15	120.6	82.5	22.2	4	22.2	38.1	31.7	60.3	31.7	22.3	22.8	34.9	9.5	21.33
20	130.2	88.9	22.2	4	25.4	44.4	34.9	69.8	35.0	27.7	28.1	42.9	11.1	26.67
25	149.2	101.6	25.4	4	28.6	52.4	41.3	73.0	41.1	34.5	35.0	50.8	12.7	33.40
32	158.7	111.1	25.4	4	28.6	63.5	41.3	73.0	41.1	43.2	43.6	63.5	14.2	42.16
40	177.8	123.8	28.6	4	31.8	69.8	44.4	82.5	44.4	49.5	50.0	73.0	15.8	48.26
50	215.9	165.1	25.4	8	38.1	104.8	57.1	101.6	57.1	62.0	62.4	92.1	17.4	60.31
65	244.5	190.5	28.6	8	41.3	123.8	63.5	104.8	63.5	74.7	75.4	104.8	19.0	73.02
80	241.3	190.5	25.4	8	38.1	127.0	53.9	101.6	53.8	90.7	91.4	127.0	-	88.90
100	292.1	234.9	31.7	8	44.4	158.7	69.8	114.3	69.8	116.0	116.8	157.1	-	114.30
125	349.2	279.4	35.0	8	50.8	190.5	79.3	127.0	79.2	143.7	144.5	185.7	-	141.30
150	381.0	317.5	31.7	12	55.6	234.9	85.8	139.7	85.8	170.6	171.4	215.9	-	168.27
200	469.9	393.7	38.1	12	63.5	298.4	101.6	162.0	114.3	221.4	222.2	269.8	-	219.07
250	546.1	469.9	38.1	16	69.8	368.3	107.9	184.1	127.0	276.3	277.3	323.8	-	273.05
300	609.6	533.4	38.1	20	79.3	419.1	117.4	200.0	142.7	327.1	328.1	381.0	-	323.85

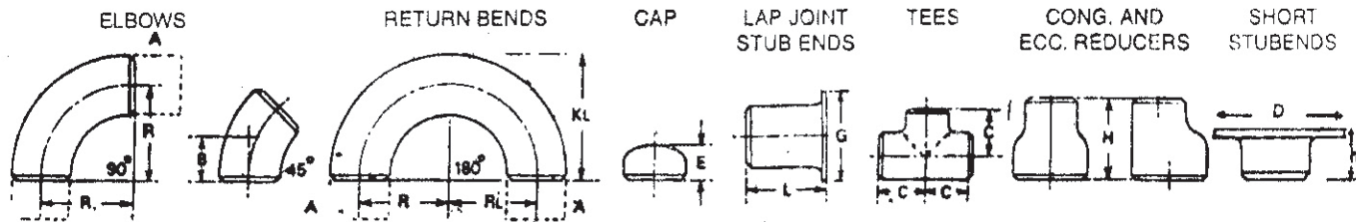
Metric values are direct conversion from Inches table of B16.5  
 RF Thickness 6.3 mm Extra to be provided (Except Lap Joint Flange & FF Flanges).





## BUTT WELDING FITTINGS

### DIMENSION IN M.M. OF BUTT WELDING FITTINGS TO ANSI B 16.9



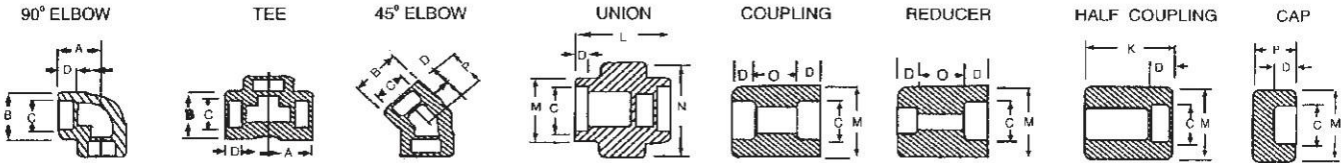
NOM BORE	PIPE OD	WALL THICKNESS				RADIUS				R	B	C	E	G	L		H	D	H
		SS	10S	40S	80S	1D	1.5D	2D	3D						SHORT	LONG			
1/2	21.34	1.66	2.11	2.77	3.73	12.7	19.05	25.4	38.1	15.9	25.4	25.4	34.9	50.8	76.2	38.1	45	8	
3/4	26.67	1.65	2.11	2.87	3.91	19.05	28.57	38.10	57.15	11.1	28.6	25.4	42.8	50.8	76.2	38.1	54	8	
1	33.40	1.65	2.77	3.38	4.55	25.4	38.1	50.8	76.2	22.2	38.1	38.1	50.8	50.8	101.6	50.8	64	10	
1 1/4	42.16	1.65	2.77	3.56	4.85	31.75	47.6	63.5	95.25	25.0	47.6	38.1	63.5	50.8	101.6	50.8	74	12	
1 1/2	48.26	1.65	2.77	3.68	5.08	38.1	57.15	76.2	114.3	28.6	57.2	38.1	73.0	50.8	101.6	63.5	84	12	
2	60.32	1.65	2.77	3.91	5.54	50.8	76.2	101.6	152.4	34.0	63.5	38.1	92.0	63.5	152.4	76.2	102	14	
2 1/2	73.02	2.11	3.05	5.16	7.01	63.5	95.25	127.0	190.5	44.0	76.2	38.1	104.8	63.5	152.4	88.9	122	16	
3	88.90	2.11	3.05	5.49	7.62	76.2	114.30	152.4	228.6	50.8	85.7	50.8	127.0	63.5	152.4	88.9	138	18	
3 1/2	101.60	2.11	3.05	5.74	8.08	88.9	113.35	177.8	266.7	57.2	95.3	63.5	139.7	76.2	152.4	101.6	148	18	
4	114.30	2.11	3.05	6.02	8.56	101.6	152.4	203.2	304.8	63.5	104.8	63.5	157.2	76.2	152.4	101.6	158	20	
5	141.30	2.77	3.40	6.55	9.52	127.0	190.5	254.0	381.0	79.4	123.8	76.2	185.7	76.2	203.2	127.0	188	25	
6	168.28	2.77	3.40	7.11	10.97	152.4	228.6	304.8	457.2	95.3	142.8	88.9	215.9	88.9	203.2	139.7	212	25	
8	219.08	2.77	3.76	8.18	12.7	203.2	304.8	406.4	609.6	127.0	177.8	101.6	270.0	101.6	203.2	152.4	270	30	
10	273.05	3.40	4.19	9.27	12.7	254.0	381.0	508.0	762.0	158.7	215.9	127.0	324.0	127.0	254.0	177.8	325	30	
12	323.85	3.96	4.57	9.52	17.45	304.8	457.2	609.6	914.4	190.5	254.0	152.4	381.0	152.4	254.0	203.2	380	35	
14	355.60	3.96	4.78	11.13	15.0	355.6	533.4	711.2	1066.8	222.2	280.0	165.1	412.8	152.4	305.0	330.2	415	40	
16	406.40	4.19	4.78	12.7	21.45	406.4	609.6	812.8	1219.2	254.0	304.8	177.8	470.0	152.4	305.0	355.6	470	40	
18	457.20	4.19	4.78	14.27	23.80	457.2	685.8	914.4	1371.6	385.7	343.0	203.2	533.4	152.4	305.0	381.0	535	40	
20	508.00	4.78	5.54	15.09	26.19	508.00	762.0	101.6	1524.0	317.6	381.0	288.6	584.2	152.4	305.0	508.0	585	40	
22	588.8	4.78	6.35	15.88	28.57	558.8	838.2	1117.6	1676.4	343	419	254	641.4	152.4	305	508	642	40	
24	609.6	5.54	6.35	17.48	30.94	609.6	914.4	1219.2	1828.8	381	432	266.7	692.2	152.4	305	508	693	40	

- 1) STANDARD : All dimensions are in mm and confirm to ANSI B 16.9 and M.S.S. P-43 where applicable Dimensional tolerances are in accordance with ANSI B 16.9 and M.S.S. SP-43 where Applicable.
- 2) RADIUS : Radius of short Elbows is 1 times nominal pipe diameter, Radius of Long Radius Elbows is 1 1/2 times nominal pipe diameter.
- 3) Material of Construction : S.S. 304/304L/316/316L/317/321 Nickel Alloys.
- 4) Alloy : We dealing in Alloy Steel fitting like, P-5, P-11, P-22, P-9 etc.



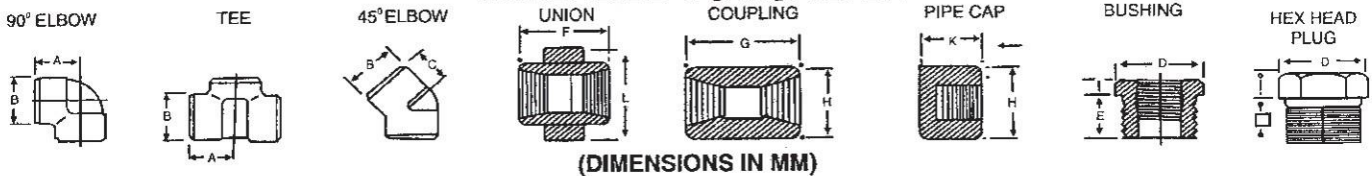
## SOCKET WELD FITTINGS

### SOCKET WELD FITTING TO ANSI B-16.11



NOM BORE	PIPE O.D.	3000 LBS.									COMMON FACTORS				6000 LBS.				
		A max.	B max.	K	J	L	M	N	P	Q	C min.	D min.	O min.	O max.	A	B	M	K	N
1/8"	10.3	22	18.5	26	16	40	17.3	32	15	10	10.7	10	5	8	22	22	20	25	46
1/4"	13.7	22	22	26	18	43	21.2	32	15	10	14.1	10	5	8	27	25	24	25	51
3/8"	17.2	25	25	26	19	48	25.4	36	16.5	10	17.6	10	3	9	27	28	28	26	60
1/2"	21.3	27	32	30	21	51	31	41	16.5	10	21.7	10	6	13	31	34	34	31	72
3/4"	26.7	34	38	36	24	57	37	50	19.5	13	27	13	6	13	37	42	41	35	80
1"	33.4	37	46	40	25	64	45.2	60	22.5	13	33.8	13	9	17	42	50	50	40	94
1 1/4"	42.2	42	56	40	29	70	55	70	22.5	13	42.6	13	9	17	47	59	58	41	100
1 1/2"	48.3	47	62	40	30	79	61.4	78	24	13	48.7	13	9	17	53	67	66	43	122
2"	60.3	56	75	52	37	89	75	95	29	13	61.2	16	15	23	59	84	83	55	
2 1/2"	73.02	60	92	52	48	114	91.3	125	32	16	73.8	16	14	24		102		56	
3"	89.00	76	110	52	51	127	108.8	140	35	16	89.8	16	14	24		121		58	
4"	114.50	88	137	58		150	136.9		42	19	115.5	19	14	24		152		64	

### FORGED SCREWED FITTING TO ANSI B-16.11 3000/6000 LBS. THREADED TO ASA B 2.1



NOM BORE	PIPE O.D.	3000 LBS.							COMMON FACTORS						6000 LBS.				
		A	B	C	G	H	K	D	E	F	I	J	L	A	B	C	G	H	K
1/8"	10.3	21	22	17	32	16	19	11	10	40	-	6	-	25	25	19	32	22	-
1/4"	13.7	25	25	19	35	19	25	16	11	43	3	6	32	29	33	22	35	25	27
3/8"	17.2	29	33	22	38	22	25	17.5	13	48	4	8	38	33	38	25	38	32	27
1/2"	21.3	33	38	25	48	29	32	22	15	51	5	8	46	38	46	29	48	38	33
3/4"	26.7	38	46	29	51	35	37	27	16	57	6	10	51	44	56	33	51	44	38
1"	33.4	44	56	33	60	44	41	35	19	64	6	10	60	51	62	35	60	57	43
1 1/4"	42.2	51	62	35	67	57	44	44.5	21	70	7	14	72	60	75	43	67	64	64
1 1/2"	48.3	60	75	43	79	64	44	51	21	79	8	16	80	64	84	44	79	76	48
2"	60.3	64	84	45	86	76	48	63.5	22	88	9	17	94	83	102	52	86	92	51
2 1/2"	73.02	83	102	52	92	92	60	76	27	118	10	21	122	95	121	64	92	108	64
3"	89.00	95	121	64	108	108	65	89	29	121	10	25	140	106	146	79	108	127	68
4"	114.5	114	152	79	121	140	68	117.5	32	150	13	25	180	114	152	79	121	159	75

DIMENSIONS AND OTHERS SPECIFICATIONS AS PER CUSTOMERS REQUIREMENTS ARE AVAILABLE ON REQUEST



## APPLICATION INDUSTRIES



Power House



Steel Plant



Offshore Platform



Chemical Industries



Petrochemical Industries

### FORMULA OF CALCULATING WEIGHT

- 1) **WEIGHT OF S. S. PIPE**  
 $O.D. (mm) - W. Thick (mm) \times W. Thick (mm) \times 0.0248 = Wt. Per Mtr.$   
 $O.D. (mm) - W. Thick (mm) \times W. Thick (mm) \times 0.00756 = Wt. Per Feet$
- 2) **WEIGHT OF S. S. ROUND BAR**  
 $DIA (mm) \times DIA (mm) \times 0.00623 = Wt. Per Mtr.$   
 $DIA (mm) \times DIA (mm) \times 0.0019 = Wt. Per Feet$
- 3) **WEIGHT OF S. S. SQUARE BAR**  
 $DIA (mm) \times DIA (mm) \times 0.00788 = Wt. Per Mtr.$   
 $DIA (mm) \times DIA (mm) \times 0.0024 = Wt. Per Feet$
- 4) **WEIGHT OF S. S. HEXAGONAL BAR**  
 $DIA (mm) \times DIA (mm) \times 0.00680 = Wt. Per Mtr.$   
 $DIA (mm) \times DIA (mm) \times 0.002072 = Wt. Per Feet$
- 5) **WEIGHT OF S. S. FLAT BAR**  
 $Width (mm) \times Thick (mm) \times 0.00798 = Wt. Per Mtr.$   
 $Width (mm) \times Thick (mm) \times 0.00243 = Wt. Per Feet$
- 6) **WEIGHT OF S. S. SHEETS & PLATES**  
 $Length (Mtrs) \times Width (Mtrs) \times Thick (mm) \times 8 = Wt. Per PC$   
 $Length (Fit) \times Width (Fit) \times Thick (mm) \times 3/4 = Wt. Per PC$
- 7) **WEIGHT OF S. S. CIRCLE**  
 $DIA (mm) \times DIA (mm) \times Thick (mm) \div 160 = Gms. PC$   
 $DIA (mm) \times DIA (mm) \times Thick (mm) \times 0.0000063 = Kg. Per PC$
- 8) **WEIGHT OF BRASS PIPE / COPPER PIPE**  
 $O.D. (mm) - Thick (mm) \times 0.0260 = Wt. Per Mtr.$
- 9) **WEIGHT OF LEAD PIPE**  
 $O. D. (mm) - Wt. (mm) \times Wt. (mm) \times 0.0345 = Wt. Per Mtr.$
- 10) **WEIGHT OF ALUMINIUM PIPE**  
 $O. D. (mm) - Thick (mm) \times Thick (mm) \times 0.0083 = Wt. Per Mtr.$
- 11) **WEIGHT OF ALUMINIUM SHEET**  
 $Length (Mtr.) \times Width (Mtr.) \times Thick (mm) \times 2.69 = Wt. Per PC$
- 12) **WEIGHT OF CONVERSION OF MTR. TO FEET**  
 $Wt. of Mtr. \div 3.2808 = Wt. Per Feet.$



Flange CNC Machine



Fertilizer Plants



Refinery Petrochemical Plant



Port Trusts



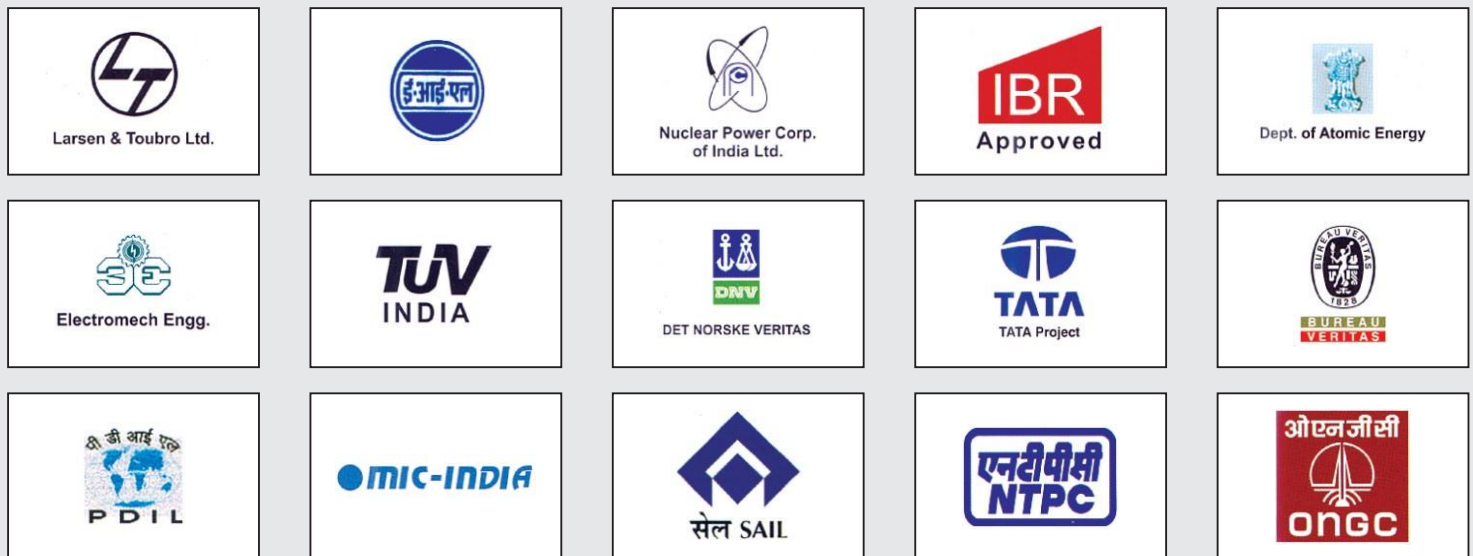
Navy Submarine



## APPLICATION INDUSTRIES

- Oil & Gas Industries
- Steel Plant & Rolling Mills Mfg.
- Automobile & Heavy Mobile Vehicle
- Material Handling Stores
- Agriculture Machinery Equipments
- Refineries
- Analyzer-lab & Testing Equipments
- Paint Industries
- Car Care Systems
- Life Sciences
- Super Market Storage & Rack System
- Automation Machinery
- Multi Parking Systems
- Military
- Power Generations Systems
- Cement Industry Machinery
- Motion & Control Tech. Equipment
- Hydrostatic Drive Systems
- Hydrostatic Press & Power Packs
- Cooling & Heating Systems
- Packaging Equipments
- Engines & Railways
- Pulp Paper Machinery
- Fuel Cells Components
- Machine Tool Application
- Industrial Mining Equipments
- Food & Beverage Equipments
- Marine Project
- Oil Mill Plants
- Aerospace & Aircraft System
- Pollution Control Equipments
- Offshore Engineering
- Plastic / Rubber Processing Machines
- Chemical Machinery

## THIRD PARTY INSPECTION



**MEGHARAM DESAI**

**9869923709/8591873152**



# MAHENDRA METALS & TUBES

Manufacturer, Exporter & Stockists of :  
 Stainless Steel, Carbon Steel, Pipe Fittings & Flanges  
**FERROUS & NON-FERROUS METALS**

Head Office No. 7, Zaveri Bldg. 6, V .P. Road, C.P. Tank, Mumbai - 400004. INDIA Tel. : 022-6743 7706 / 6610 5060

Mob : 98699 23709, E-mail : mahendrametals@rediffmail.com, Website : www.mahendrametals.com  
 arvinddesai386@gmail.com Website : www.mahendrametals.com